

ANAWHITEKNOCK-OFFWOOD

100s OF FREE AND EASY KNOCK-OFF FURNITURE PLANS TO SAVE YOU \$1000s

PLANS: Single Locker

Skill Level: Beginner



Locker

These simple, easy to build lockers, can be grouped together to fit your family's needs perfectly. Build one at a time, one in each color, or just one in the bathroom for your favorite bath robe and washcloths.

Copyrighted Material

See www.knock-offwood.com for full disclaimer

ANAWHITEKNOCK-OFFWOOD

100s OF FREE AND EASY KNOCK-OFF FURNITURE PLANS TO SAVE YOU \$1000s

PLANS: Single Locker

SHOPPING LIST

Quantity	Description
2	1x12, 10' Length
2	1x2, 8' Length
1	1x3, 14" Length
1	¼" Plywood or Beadboard or Paneling (for the back)
	1 ¼" and 2" Finish Nails
	2" Wood Screws
1	Small Tube Wood Glue
	Finishing Supplies including wood filler and sandpaper, knobs or pulls

RECOMMENDED TOOLS

Measuring Tape, Square, Saw, Finish Nailer, Drill with Countersink Bits, Sander, Clamps, Kreg Jig

CUT LIST

	Quantity	Board	Length	Description
A	2	1x12	67 1/4"	Box Sides
B	3	1x12	15 ½"	Shelves
C	1	1x12	17"	Wide Sides
D	1	¼" Plywood	17"x68"	Back
	2	1x2	65 3/4"	Leg Trim
E	2	1x2	17"	Crown and Header
F	1	1x3	14"	Footer

IN GENERAL

Refer to the blog at www.knock-offwood.com for any comments of suggestions for this plan. Always wear necessary safety equipment and take safety precautions. Check for square after each step.

Measure all joints out and mark clearly with a square on BOTH sides of the joint (so you know where to nail). Use glue unless otherwise stated. Always predrill and countersink any screws. If you are using MDF, avoid fastening too close to the edges to avoid splitting your MDF.

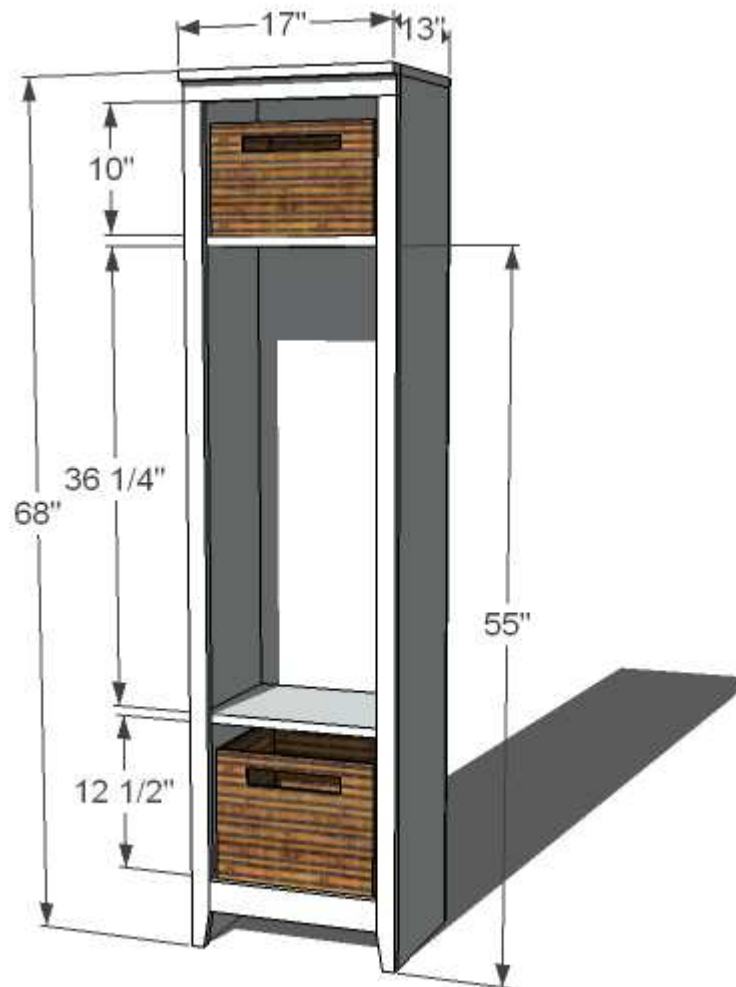
Copyrighted Material

See www.knock-offwood.com for full disclaimer

ANA WHITE KNOCK-OFF WOOD

100s OF FREE AND EASY KNOCK-OFF FURNITURE PLANS TO SAVE YOU \$1000s

PLANS: Single Locker



DIMENSIONS AND COMPOSTION

Dimensions are shown above. Most inexpensive composition is pine boards (or whitewood boards) and a pine project panel for the table top.

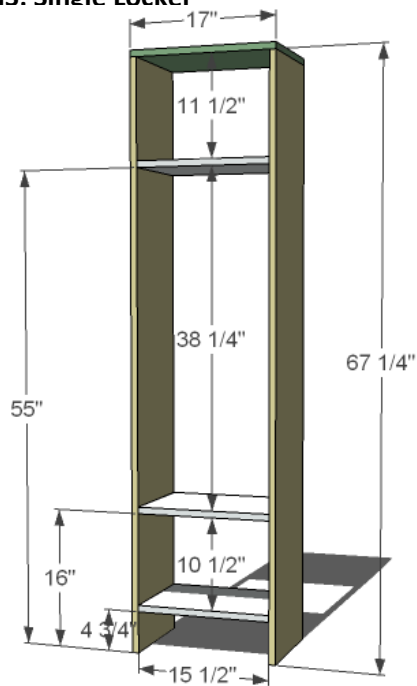
Copyrighted Material

See www.knock-offwood.com for full disclaimer

AN WHITE KNOCK-OFF WOOD

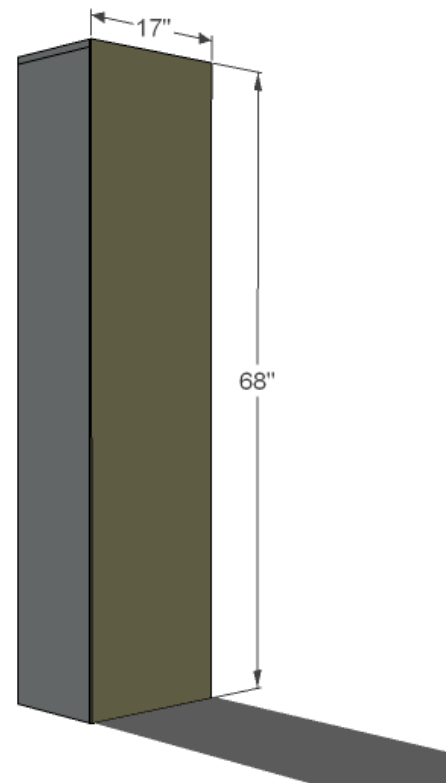
100s OF FREE AND EASY KNOCK-OFF FURNITURE PLANS TO SAVE YOU \$1000s

PLANS: Single Locker



STEP 1: BUILD THE BOX

Mark the sides for all the joints as shown in the diagram. Remember, a 1x12 is 3/4" wide. Use 2" screws and glue to fasten the shelves to the sides, and the top to the sides. If you are using pocket holes screws, use the appropriate length screw for 3/4" thick stock.



STEP 2: BACK

Use 1 1/4" nails and glue to attach the back to the box, as shown in the diagram. Make sure you square the locker up and nail to all the shelves.

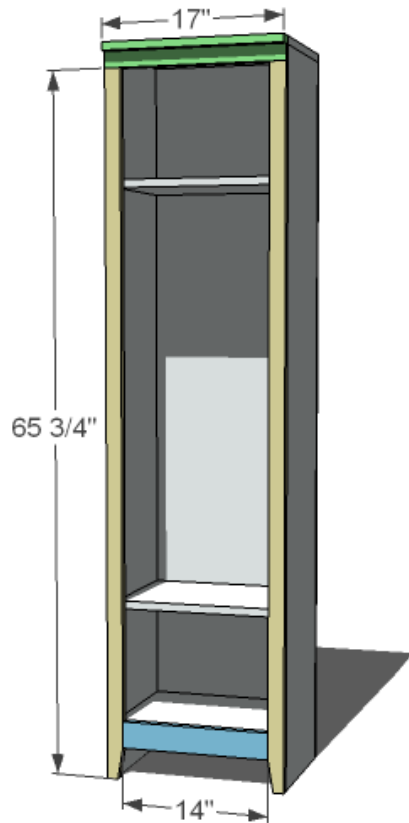
Copyrighted Material

See www.knock-offwood.com for full disclaimer

ANAWHITEKNOCK-OFFWOOD

100s OF FREE AND EASY KNOCK-OFF FURNITURE PLANS TO SAVE YOU \$1000s

PLANS: Single Locker



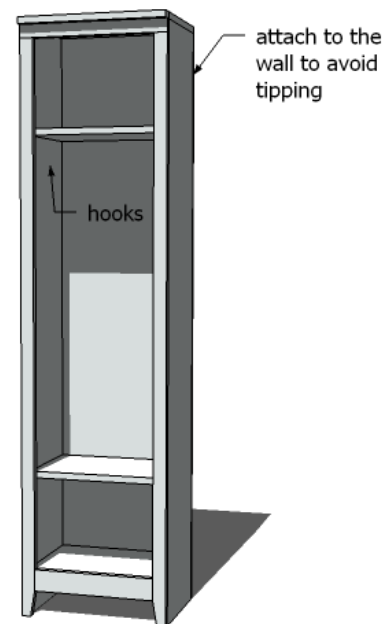
STEP 3: FACE FRAME

Begin by attaching the sides to the box sides, keeping bottom and outside edges flush. Use 1 1/4" finish nails and glue. Then attach the header and the footer. Finally, attach the crown to both the header and the top of the locker with a 2" nails through the face of the header.

If you have a Kreg Jig, you can build the face frame separate, then attach to the box using 1 1/4" finish nails and glue.

STEP 4: HOOKS AND ASSEMBLY

Attach the hooks to the locker cubby and attach to a stud in the wall behind the locker to keep the locker from tipping forward.



Copyrighted Material

See www.knock-offwood.com for full disclaimer

ANAWHITEKNOCK-OFFWOOD

100s OF FREE AND EASY KNOCK-OFF FURNITURE PLANS TO SAVE YOU \$1000s

PLANS: Single Locker

FINISHING

Fill all holes with wood filler. Sand with coarse sandpaper. Fill holes with wood filler again, and sand with medium grit sandpaper. Then finish with a fine sandpaper. Always sand in the direction of the wood grain. If you are painting, prime, painting the insides first, outsides last. Add two coats of paint. You can add a clear top coat if you wish. For staining, always test out a scrap piece, with wood filler. If the wood filler is not taking stain, you may wish to buy a color coordinated wood filler and fill your holes with this. If the stain is going on blotchy, you may need to apply a wood conditioner prior to the stain. Apply a top coat if necessary.

It is highly recommended that the hutch be secured to the desk and also a stud in the wall behind the desk. Failure to do so could result in injury or even death. Build and use at your own risk. For full disclaimer, visit www.ana-white.com

Copyrighted Material

See www.knock-offwood.com for full disclaimer